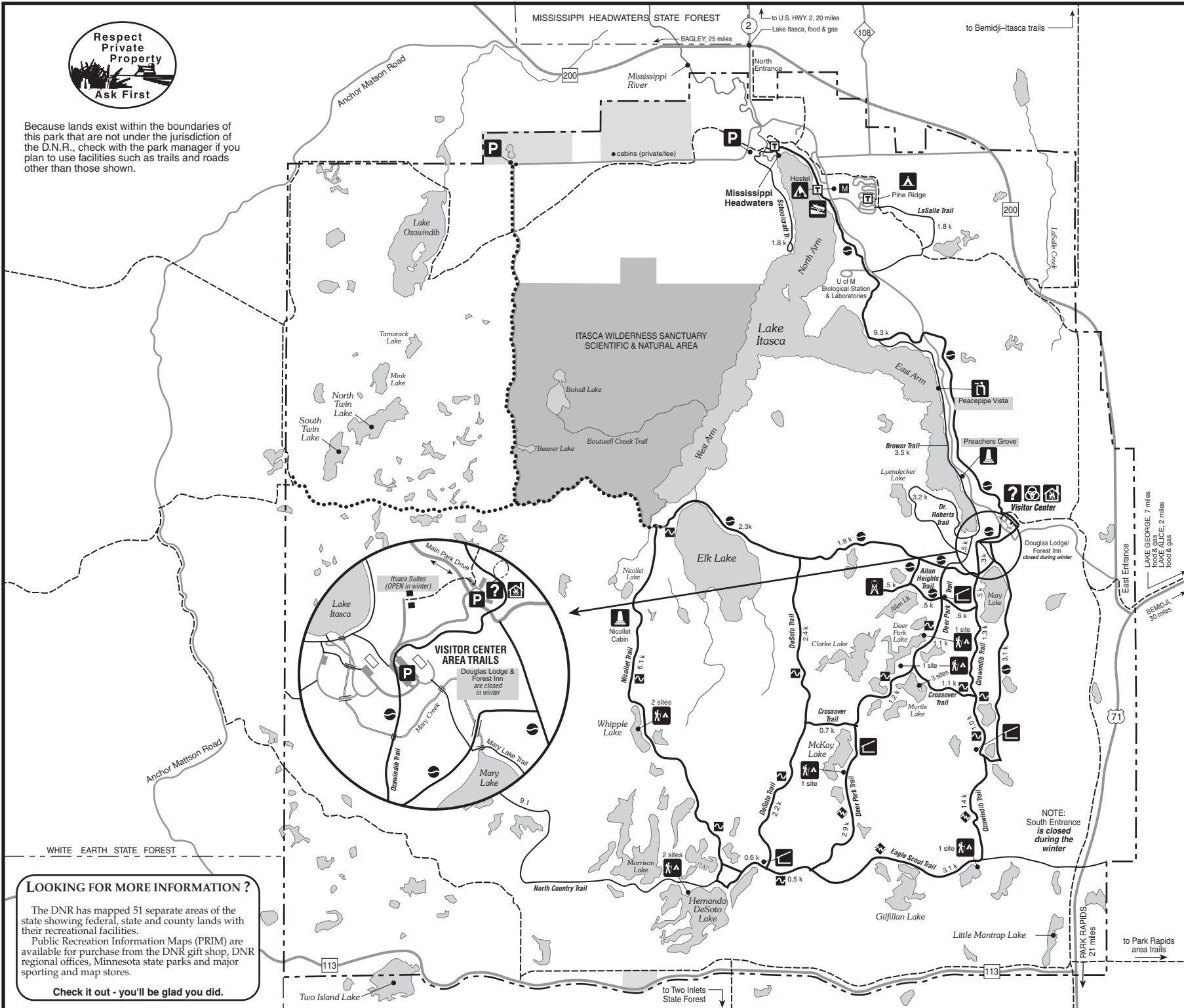




Because lands exist within the boundaries of this park that are not under the jurisdiction of the D.N.R., check with the park manager if you plan to use facilities such as trails and roads other than those shown.



**LOOKING FOR MORE INFORMATION ?**

The DNR has mapped 51 separate areas of the state showing federal, state and county lands with their recreational facilities.

Public Recreation Information Maps (PRIM) are available for purchase from the DNR gift shop, DNR regional offices, Minnesota state parks and major sporting and map stores.

**Check it out - you'll be glad you did.**

- ### LEGEND
- #### WINTER TRAILS
- Cross-Country Ski
    - easy
    - more difficult
    - ◆ most difficult
  - Hiking/Snowshoe
  - - - Snowmobile
  - · - · - Interpretive
  - · · · · Skijor Trail
- #### FACILITIES
- ❓ Information
  - 🏠 Visitor Center
  - 🏠 Warming House
  - 🏠 Historic Site
  - 🏠 Overlook
  - 🏠 Observation Tower
  - 🏠 Campground
  - 🏠 Backpack Camping
  - P Parking
  - 🏠 Hostel
  - 🚻 Restrooms
  - 🚤 Boat Access
  - T Toilet
  - M Maintenance
  - Private Property
  - Public Use Prohibited
  - Except On Designated Trails

NORTH

0 0.5 1.0 Miles

0 0.5 1.0 Kilometers

© 1/2007, State of Minnesota, Department of Natural Resources

**ITASCA STATE PARK** is located 20 miles north of Park Rapids, Minnesota on U.S Highway 71 in three counties: Clearwater, Hubbard, and Becker. Highway map index: F-9.

**GENERAL DESCRIPTION**

At Itasca State Park, the mighty Mississippi River begins its 2,552-mile journey to the Gulf of Mexico. Established in 1891 to preserve remnant stands of virgin pine and to protect the basin around the Mississippi's source, this 32,000-acre park has become a famous natural and cultural landmark in North America.

**WINTER FACILITIES**

- Jacob V. Brower Visitor Center. This facility is open during the winter as a warming shelter. Park information, restrooms, interpretive exhibits, gift shop and a fireplace are available.
- Douglas Lodge, Brower Inn, Headwaters/Forest Inn gift shops and cabins are closed during the winter. Parking for skiers is available.
- The Itasca Suites are open for lodging in the winter. Features include two queen beds, refrigerator, stove, microwave, sink, dishwasher and cooking utensils.
- Mississippi Headwaters Hostel. Located near the Lake Itasca boat landing. Offers clean, comfortable year-round accommodations. This facility is operated by Hostelling International.
- Pine Ridge Campground. During the winter months, camping is rustic, with pit toilets, and water available at the visitor center.
- Backpack Sites. Eleven backpack campsites are available year-round with a 1 to 5 mile hiking distance into the southern half of the park. Register at the visitor center.
- Cross-country ski licenses and park vehicle permits are required and can be purchased at the visitor center.
- Ski trail parking is located at the at the visitor center. Ski trails start at the main kiosk.
- Snowmobile trailer parking is available at the visitor center. Access the trail system here.
- Pets are not allowed on ski trails.
- Skiers must be off trails before dark.
- Snowmobilers must use designated trails only.
- Trails not designated as ski or snowmobile are available for snowshoeing. The Dr. Roberts and Schoolcraft Trails are two of the more popular snowshoeing trails.
- Interpretive programs. Some winter interpretive programs are available. Check park information boards.
- The Aiton Heights Fire Tower is closed to climbing during the winter months. Interpretive area open.
- The walkway to the Mississippi Headwaters is open year-round.

NOTE: South Entrance is closed during the winter



# ITASCA STATE PARK

## FOR MORE INFORMATION

Itasca State Park  
 36750 Main Park Drive  
 Park Rapids, MN 56470-9702  
 (218) 266-2100



Department of Natural Resources  
 Information Center  
 500 Lafayette Road  
 St. Paul, MN 55155-4040

296-6157 (Metro Area)  
 1-888-646-6367 (MN Toll Free)

TDD (Telecommunications  
 Device for Deaf)  
 296-5484 (Metro Area)  
 1-800-657-3929 (MN Toll Free)


DNR Web Site: [www.dnr.state.mn.us](http://www.dnr.state.mn.us)  
 State Parks page: [www.mnstateparks.info](http://www.mnstateparks.info)

## SNOWMOBILE MAP LEGEND

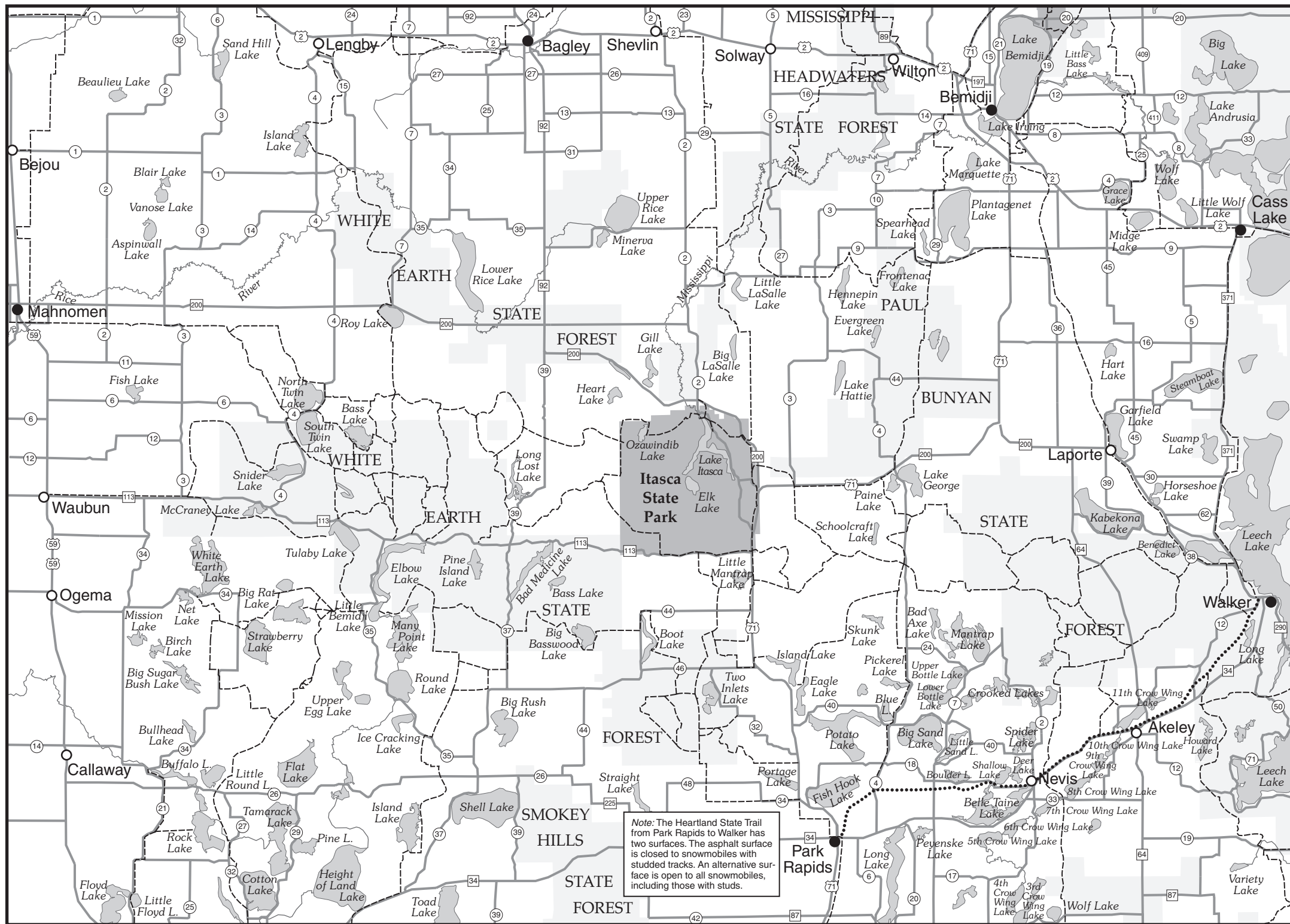
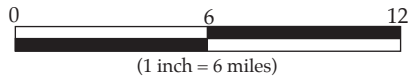
-  **Snowmobile Trail**  
open to all snowmobiles
-  **Asphalt-surface State Trail**  
studded track restrictions

**Asphalt Trail**

A new state law restricts metal studs on 216 miles of asphalt State Trails. All other trails are open to snowmobiles with studded tracks.

 **No Studded Tracks**

On some sections of the affected State Trails, alternate routes open to all snowmobiles have been provided. They provide links with the grant-in-aid trails, and a connection to service areas. For more information call the DNR Information Center phone number noted above.



*Note: The Heartland State Trail from Park Rapids to Walker has two surfaces. The asphalt surface is closed to snowmobiles with studded tracks. An alternative surface is open to all snowmobiles, including those with studs.*